

# Worthing Archaeological Society

A very Merry Christmas, and a Happy, Healthy and Archaeological New Year to you all.

## [News sheet](#)

## [December 2016 – January 2017](#)

### [Fieldwork](#)

Another excavation on Field 20 at Slindon is planned for March 18<sup>th</sup> – 26<sup>th</sup> inclusive. There will also be a site visit there on Saturday January 14<sup>th</sup>, and a kit checking day in February.

More details to follow, but if you are interested, please sign up now.

Email Keith:

[keithbolton14@gmail.com](mailto:keithbolton14@gmail.com)

if possible, with dates you can be there.

### [Finds Processing](#)

Throughout the year the Finds Team meets at 9.30am, twice-monthly, at our Slindon base, led by Gill Turner.

The next dates are: 1<sup>st</sup> and 15<sup>th</sup> December and 5<sup>th</sup> and 19<sup>th</sup> January.

On Thursday 15<sup>th</sup> we'll have our Christmas 'Get-together' at the Shed - come and join us for coffee, mince pies and sausage rolls - all welcome.

Bob is running a series of flint recognition sessions, as you can see. 16 folk there on November 16<sup>th</sup>.



It's a very serious study.....



If you are interested and not already involved, please contact Gill.

[Ggmturner@aol.com](mailto:Ggmturner@aol.com)



Normal chaos in the Finds Shed.

### [Surveying](#)

is having a quiet time at the moment.

There will be updates.

If you would like to be involved, email Connie on [connieshirley1@aol.com](mailto:connieshirley1@aol.com) so that you can be added to the distribution list for the activities.

### [WAS website change.](#)

Thank you to everyone who came to the website introduction session in November.

Just as a reminder, the new website can currently be found at:

**[www.worthingarchaeological.org](http://www.worthingarchaeological.org)**.

The society are open to suggestions for any content you think would look good on the website, so please let them know if you have any recommendations. Articles and write-ups on old dig sites or artefacts found by the society would be particularly helpful.

Webmasters Richard and Theresa can be contacted via

[theresa\\_in\\_brighton@yahoo.co.uk](mailto:theresa_in_brighton@yahoo.co.uk)

A new members-only Facebook page has also been set up. It is a closed group, meaning that

discussion about sensitive information, such as the location of your digs, will be secure. If you would like to join the group, simply search for *Worthing Archaeological Society* on Facebook and click *Join Group*.

Roman architects may always be more interesting than website ones, but I hope the society benefits from its new online presence.

All the best for the future,

Carlie Bradshaw

(Many thanks to Carlie for all the work you have done for us and congratulations on your Masters Degree)

### New Year Walk

For those who might want to stretch their legs after the festivities.....

Monday January 2<sup>nd</sup>.

Full details at the end of the Newsletter.

Please let Theresa know by December 27<sup>th</sup> if you are coming, and whether you'd like lunch. Thanks.

### Lecture Programme

All Lectures are held in the Worthing Library Lecture Theatre at 7.30pm.

#### December 13

**Judie English on 'What does land organisation tell us about social change in late prehistoric Sussex?'**

The creation of visible boundaries says something profound about the relationship between people and land. The first boundaries we recognise are large Bronze Age field systems but in the Late Bronze Age / Early Iron Age these go out of use and are replaced by smaller fields and cross dykes - boundaries which seem to be aimed at controlling movement of people and stock. Eventually we end up with hillforts. This talk will ask what social change underpins these developments, and whether this is a local, regional or international change.

#### January 10, 2017

**Jane Russell on 'Neolithic Rock Art in Britain and Ireland: sacred or secular works of art, or merely random graffiti'**

This talk will cover the different types of Rock Art found in Britain and Ireland, from the Neolithic tombs in the Boyne Valley of Ireland, Wales and Orkney; plus other types of sites in Northumbria and Kilmartin in Scotland. The discussion will look at the rock art to see if there are any connections or similarities between the different areas and sites, and whether it is possible to build a chronology, or even date the art.

#### February 14

**Keith Bolton on 'A look back at WAS Field Unit Activities'**

The lecture will cover the Field Unit projects undertaken since 1997.

John Pull Lecture

Glass of wine or cup of coffee afterwards

#### March 14

[AGM at 7.00pm followed by Lecture at 7.30pm](#)

**Mike Allen on 'Why Stonehenge is where it is'**

#### April 11

**Oliver Gilkes**

Two Ancient Cities: Archaeology at Butrint and Gjirokastra in Albania.

### Notes from the Museum

*Information wanted* by Sioned Vos

Some of you know that, following Roy Plummer's painstaking sorting through plans and photographs retained by the late Con Ainsworth, they have been transferred to Worthing Museum, where I am, with Liz Lane's help, formally accessioning them.

It never rains but it pours: we've also had a quantity of material excavated by Con handed over to us, which had been stored in his garage for several years. Most of this is currently being worked on by the Finds Team at Slindon.

This provides us with the opportunity to reconcile the archive for a number of excavations we knew about and from which there's already material at the Museum, such as the Binsted kilns; some sites we only knew of from short notes in various files and Minutes - and some completely unknown ones!

As most of the work was done in the 1960s and '70s the records are, not surprisingly, incomplete. However, I'm hoping that some members of the Society might recollect the work or even took part in these excavations. If you remember, visited or dug at any of the sites

listed below, or even at any others not listed, please get in touch with me or Liz (Liz's address is at the end of the Newsletter) and help us fill in some of the gaps.

- A site producing Iron Age, Roman and medieval potsherds, with site code "CM64" or "CM69" – if you have any idea of where this one is it would be very helpful
- Cissbury House (1961/62)
- Arundel (1965 – Post Office) and Tarrant Street (1967)
- Harrow Hill (1966) with Dr Ratcliffe Densham and also (1970/71) as part of Adult Education classes
- Tarring (1961, 63 and 67)
- Tortington (1968)
- Site code "SO 70" – probably an early Roman site in Sompting
- Durrington, Fleething [or Fleetwing?] Estate (1970)
- Slinfold "Roman Gate" (1970)
- Pulborough Roman temple site (1970/71)
- Sompting, Marquis of Granby (1970/71)
- New Monks Farm (1970 and 1971) – Adur Valley salterns
- Upper Beeding: 5 and 8 Mains Farm Road (1970/71 – watching brief)
- Clapham, Merry (or Merrie) Garden (1971 and 1972)
- Patching Pond (1972)
- Coldwaltham, Silverdale Estate (1973)
- Findon Park (1973)
- Goblestubbs (1973)
- Hammerpot (1973/74) – there were two sites here, one medieval, and another Mesolithic.
- Burpham Church (1974?)
- Goring Church (1974 and 1975)
- Sompting Church (1976)
- Patching and Patching Copse (1976 – near Selden Farm)
- Highdown Hill (undated – section through a water pipe trench?)
- Graffham (?Field Edge – 1988)

Con also carried out some resistivity work using a borrowed proton gradiometer at several sites mostly in 1967/68, including Graffham, Grevatt's Wood, West Burton and Hardham among others. It would be interesting to know who helped him with this. We have a number of plots for what Con called his "bleepings"; they are not easy to interpret.

We're looking forward to hearing from you!

Sioned [sionedvos@aol.com](mailto:sionedvos@aol.com)

#### [October Lecture](#)

Gordon and Amie, our excellent Site Supervisors, gave a well-illustrated talk, to an almost full house, on the two digs at Goblestubbs Copse in 2106, and on possible areas to look at in future.

Watch out for their Report in the Journal.

#### [November Lecture](#)

David Rudling gave a most interesting lecture and update on Roman Villas in Sussex. He defined a 'villa' as a rural house showing aspects of Roman culture, for example mosaics, wall plaster, a bathhouse, hypocaust, etc. He is interested in the process by which indigenous people became 'Romanised' and suggested that it may have been something like the British colonial impact on India in Victorian times.

Sussex has a number of large early 1<sup>st</sup> C AD villas, e.g. Fishbourne, Angmering, Southwick and Pulborough, but apart from Fishbourne, which developed into a palace, they were in decline by the beginning of the 2<sup>nd</sup> century. By the end of the 1<sup>st</sup>/beginning of the 2<sup>nd</sup> C rural settlements started to build rectangular houses, for example Park Brow, where wall plaster was found and a door key.

David asked the question 'How Roman were the villa owners?' Baby burials and animal offerings, found beneath floors at several Sussex villas, were not Roman customs. Roundhouses have been found under some villas such as Barcombe and Beddingham and there is evidence of villas being deliberately built adjacent to or near Bronze Age sites.

Corridor villas developed from 3 or 4-room buildings, for example, Barcombe, Beddingham and Walberton and by the 4<sup>th</sup> C some like

Bignor became large courtyard villas with a separate aisled hall.

We need to think about villa estates – there are none found so far in Sussex and also about the end of the villas. Maybe it was the Saxon pirate raids or a gradual decline after the Romans departed in AD 410. Barcombe would appear to have been abandoned and the stone was robbed in Medieval times. At Fishbourne there was a disastrous fire in the late 3<sup>rd</sup> C and it was never rebuilt, and a roof collapsed in the southcorridor at Bignor. Batten Hangar, however, was occupied with building work continuing into the 5<sup>th</sup> C. Gill and Liz

### [Medieval Pottery Day with Duncan Brown. November 26<sup>th</sup>.](#)

This was a very successful and fascinating day with Duncan in the Museum Education Room. In the morning Duncan went through the 2 main features of pottery, fabric and form, and listed all the parts of vessels to look for – lid, rim, spout, base etc. He went through how pot was made - basically by hand, or on a wheel - how it was fired, and led us from the Post-Roman period to modern - from about 350 to 1850. The Industrial Revolution changed everything - from production to transport to taste in pottery. After lunch, in groups, we had a collection of sherds to try to sort into chronological order – to see whether we'd learned anything in the morning!

For example:



Duncan rounded off the day by comparing 5 different domestic sites in which he'd been involved – from a peasant farmstead on Fyfield Down, via Launceston Castle to Bull Hall in Southampton – looking at the proportions of different kinds of pot in each. It certainly put people back into the Archaeology. Thanks to Duncan for an excellent day.

### [WAS T-shirts](#)

Patricia has researched t-shirts for us. If you would like to buy a WAS t-shirt, please see details at the end of the Newsletter. For an example, as worn by Patricia at the Social, see below!



[May 2017](#) would have been Con Ainsworth's 100<sup>th</sup> birthday. We are planning a commemorative walk on his birthday in May, and a special Newsletter about him. If you would like to contribute to this, with memories or anecdotes or ideas, please contact Liz:

[liz.13lane@gmail.com](mailto:liz.13lane@gmail.com)

5 Smugglers' Walk  
Goring-by-Sea,  
West Sussex.  
BN12 4DP

### [Annual 'Brenda' walk in October](#)

A select group of folk went on our annual walk to remember those WAS Members we have lost.



Photo by Jacqui.

### Autumn Social. November 25.

About 20 Members and friends enjoyed our annual Social at the Gardener's Arms, with quizzes and a good buffet. Congratulations to Connie, Eunice, Maria, Ian and Liz P – they were the winning team for the quizzes. Thanks to Alex and Chris for the quizzes.



### Annual Journal

Is being assembled by our trusty Editor, Cheryl, and will appear in the New Year.

Congratulations to Amie. Already a Master of Archaeology, now she's licensed to teach!



### Worthing Heritage Alliance

WAS is a member of the WHA. Do look at their website to see what is going on in the Heritage field in Worthing.  
[www.worthingheritagealliance.org.uk](http://www.worthingheritagealliance.org.uk)

### Easy Fundraising

If you shop online, consider using Easyfundraising to make donations to WAS.  
<https://new.easyfundraising.org.uk>  
Retailers give part of every amount spent to WAS if you nominate us as your charity.

### Horsham and District Archaeology Group

[horshamarch@hotmail.co.uk](mailto:horshamarch@hotmail.co.uk)

### Brighton and Hove Archaeological Society

Talk starts at 7.30pm at the Unitarian Church, New Road, Brighton. Free entry to BHAS Members, non-members £3.00

9<sup>th</sup> December Speakers John Skelton and Jane Russell **The Rock Art of Kilmartin, Argyll, Scotland.** The BHAS AGM will precede the talks and that starts at 7pm..There will be Christmas celebrations after the Talk. 13<sup>th</sup> January John Manley on the **Archaeology of the South Downs National Park.**

**The BHAS Days Schools** - This season the day schools consist of a triple bill by the brilliant Matt Pope on 'The Evolution of Man'. Dates are Saturdays January 21<sup>st</sup>, February 18<sup>th</sup> and March 18<sup>th</sup>. Each day school will cost £25, not all payable at the same time, you can post-date any cheques. Contact Maria at [maria.gardiner@tesco.net](mailto:maria.gardiner@tesco.net) Miles Russell will also be giving a day school on Celtic and Roman Art on April 1st.

### USAS Lecture Series 2015/16

All talks start at 7.00pm (just turn up)  
Venue: FULTON BUILDING Lecture Theatre A University of Sussex,  
£2 Members, £3 Non-Members  
Thursday 19th January 2017  
*Gold and garnets - metalwork as an indicator of social change in the Early and Mid-Saxon period* Speaker: Dr Judie English

### Beeding and Bramber Local History Society

Meetings are held at 7.45pm in Beeding & Bramber Village Hall, High Street, Upper Beeding, BN44 3WN and visitors are always welcome, entry for them £2.  
Dec. Christmas Social to be arranged  
Wed. Jan. 6th at 7.45 pm Janet Pennington on Steyning Scandals  
Wed February 1<sup>st</sup> "Princess of Dreams - The life and times of Lydia Yavorska, Princess Bariatinsky" by John and Jeanette Simpson. Lydia Yavorska is buried in St Nicholas' churchyard, Old Shoreham.

The Sussex School of Archaeology has a full programme of training courses throughout the year.

[www.sussexarchaeology.org](http://www.sussexarchaeology.org)

[Liss Archaeology](#)

<http://www.archaeology.co.uk/digging/fieldwork/the-colemore-project.htm>

[Eastbourne Natural History & Archaeological Society](#)

[www.eastbournearchaeology.org.uk](http://www.eastbournearchaeology.org.uk)

[Chichester District Archaeology Society](#)

For their activities:

[www.cdas.info](http://www.cdas.info)

[Wealden Buildings Study Group](#)

January 15<sup>th</sup> Janet Pennington 'A History of the Adur Valley' and Richard Howell 'Limeburners, Lords and Labourers'

From 10am – 5pm in Wivelsfield Church Hall, Church Lane. RH17 7RD.

See their website:

[www.wealdenbuildings.org.uk](http://www.wealdenbuildings.org.uk)

[And finally a reminder](#)

Subs for 2017 will be due on January 1<sup>st</sup> - £25 for ordinary members, £10 for full-time students.

Please send to:

Liz Lane,  
Membership Secretary.  
5 Smugglers' Walk  
Goring-by-Sea,  
West Sussex.  
BN12 4DP

Or see Liz at Lectures.

Membership forms can also be downloaded from the WAS website.

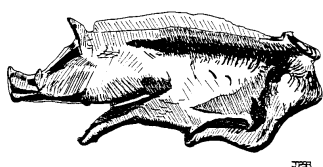
[worthingarchaeological.org](http://worthingarchaeological.org)

Items for next News sheet please to

Liz, as above,

or [liz.13lane@gmail.com](mailto:liz.13lane@gmail.com)

The Worthing Archaeological Society is a registered Charity (291431)



## Worthing Archaeological Society

### New Years' Walk

Monday 2<sup>nd</sup> January 2017 11am

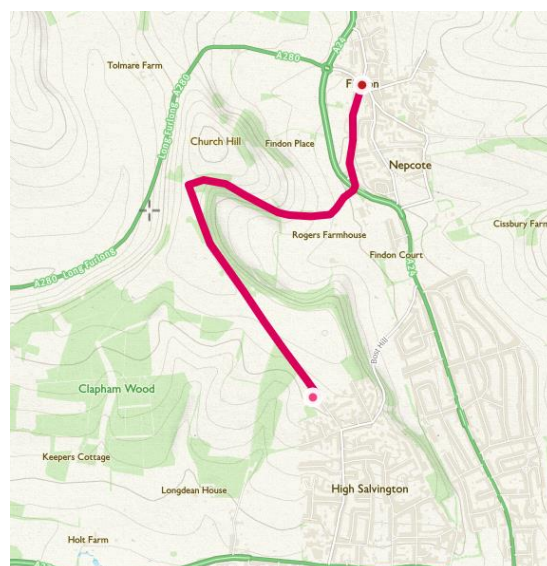
High Salvington to Findon village and  
lunch at the **Gun Inn** 12.30pm

We will meet 11am in the car park of The Sanctuary just off Honeysuckle Lane in High Salvington and walk to the Gun Inn, Findon village. The walk will be along a restricted byway and track where the terrain is mostly moderate but can be uneven, steep and muddy in places

- Walking up hill from the car park ascending gently approx. 217 feet across the ridge and descending 386 feet into the village – burning 160 Kcal - **Approx. 2.18 miles.** (one way)
- We will be stopping on route to view archaeological features within the map area – some of national and international importance. Neolithic - Early Bronze Age - Later Bronze Age - Iron Age - Later Iron Age - Anglo Saxon - Medieval – as well as some WWII sites.

**If the weather is awful (hurricane/blizzard) or if you prefer - please meet at the Gun Inn 12.30pm**

**Main Dinner Menu will be emailed soon**



**This is their menu for lunch.**

#### **SANDWICHES**

All sandwiches are served with fries and salad

Steak Baguette - Sirloin steak, wholegrain mustard, mayo, gem lettuce, tomato, onion marmalade, 9.95

Pastrami - Pastrami, mayo, pickles, american mustard, swiss cheese. 8.95

Smoked Salmon Bagel - Smoked salmon, cream cheese, cucumber, dill, lemon wedge, toasted bagel. 8.95

Double Cheese - Smoked, cheddar, red onion. 7.95

BLT - Bacon, mayo, tomato, gem lettuce. 7.95

Open Prawn Sandwich - Prawns, sprinkle of cayenne, lemon wedge. 8.95

Goats Cheese Bagel - Pesto, fresh tomato, goats cheese, toasted bagel. 7.95

#### **PLATTERS**

Two cheese ploughman's. 8.95

Pate Ploughmans. 8.95

Smoked Fish ploughman's. 8.95

**Worthing Archaeological Society Printed T Shirts**

**With or without the Boar logo**

**Supplied by ARTIFAX Printers and Stationers – see details below.**

**T-shirts, Adults**

	<b>Text only</b>	<b>Inc. A4 Image</b>	<b>Reverse</b>
Shirts 1 - 10	£12.50	£13.00	£3.00
Shirts 11 - 15	£10.50	£11.00	£2.50

**T-Shirts, Kids**

	<b>Text Only</b>	<b>Inc. A4 Image</b>	<b>Reverse</b>
Shirts 1 - 10	£9.50	£10.00	£2.50
Shirts 11 - 15	£7.50	£8.00	£2.00

**T shirts also available in different colours**

**Please be aware these prices are accurate at time of printing but may be subject to change at the manager's discretion. A 50% deposit must be paid at time of ordering.**

**Other items available eg: Polo Shirts, Hoodies, Sweatshirts.**

**Various types of makes of T shirt eg: Fruit of the Loom etc.**

**NB: 10% Discount for WAS Members**

**Available from ARTIFAX – Printers and Stationers**

**Telephone: 01903 821177**

**Email: [shop@artifaxonline.com](mailto:shop@artifaxonline.com)**

**Website: [www.artifaxonline.com](http://www.artifaxonline.com)**

**Address: 5 Broadwater Street West, Worthing, BN14 9BT**