

ROWE'S BARN, SLINDON, WEST SUSSEX

NGR SU953091

Location

Rowe's Barn lies approximately 1.25 km northwest of Slindon village, lying on the dip slope of the South Downs. It is accessed along the track running northwest from Courthill Farm and stands at a field junction. The barn lies on the slope of a hill with its long axis running downhill. It is presently used to house farm machinery.

Sequence of Development

Period 1

A probable date for the barn is the first half of the nineteenth century when the region was enjoying prosperity. It is built of flint courses with brick quoins and has 2 rows of 3 triangular ventilators on the west wall, and 1 row each of 6 ventilators on the north and south walls. Triangular ventilators were introduced during the latter part of the eighteenth century. The walls to the west and north have been strengthened with brickwork. Timbers forming the wallplate of the southern wall are joined by an edge-halved scarf joint with bridled-butts, suggesting that traditional well-established building methods were used.

The roof style is fully hipped and broken pieces of slate found in the adjacent field suggest the original roofing was of slate tiles, while at present the roofing is of corrugated asbestos. The north and south slopes of the roof are at different angles. The present angles are probably not those of the original roof.

The barn is divided into 5 bays however the roof is not original. Four collars support queen struts and the strut on the northwest corner is absent.

Period 1 building had high waggon doors in the north wall which were matched by a lower pair on the south wall. The wooden lintel for the southern doors is in place and the outer doorway was built in a shallow brick arch.

It is suggested that the original building was built as a field barn with a threshing floor which is now not possible to discern as the present floor is of concrete.

Period 2

Some time after the barn was built the larger part of the waggon doors on the north wall were blocked, making a smaller entrance. The same took place on the southern doorway. It is possible that the opening, 1.06 x 1.37 m wide up to the wallplate in the southwest corner of the south wall was made at this time to increase visibility and ventilation.

At this time it is probable that the stockyards to the north and south were built. In the yard to the north there remain pairs of posts 2-3 metres apart which could have been used for tethering animals. This change of use to housing animals was at a time when animal husbandry had improved with the use of reclaimed downland for pasture and development of fodder from new grass varieties and root crops.

A lead pipe opens in the southwest corner of the south wall. Flints have been removed from the bottom north corner of the west wall and later blocked with bricks. These may have been to allow drainage.

Period 3

Some time later both the remaining doors were blocked and a large new opening with a sliding door was made in the east wall. The top of the doorway in the north wall was left open possibly to increase visibility. The change of use to housing large pieces of farm machinery must have necessitated the making of the new doorway. The internal walls have recently been rendered to approximately half their height with concrete, and the present floor is concrete and slopes to the west.

The barn appears on the 1835 draft of the 1840 Tithe Map, prepared by Henry Salter of Arundel, with roofed portions of the stockyard adjacent to the north barn wall. On the Ordnance Survey map surveyed in 1876 the roofed portions cover 3 sides of the northern yard.

Tina Alford
Bob Turner
Cheryl Hutchins

7.12.98

Figure 1
Plan of Barn with Stockyards

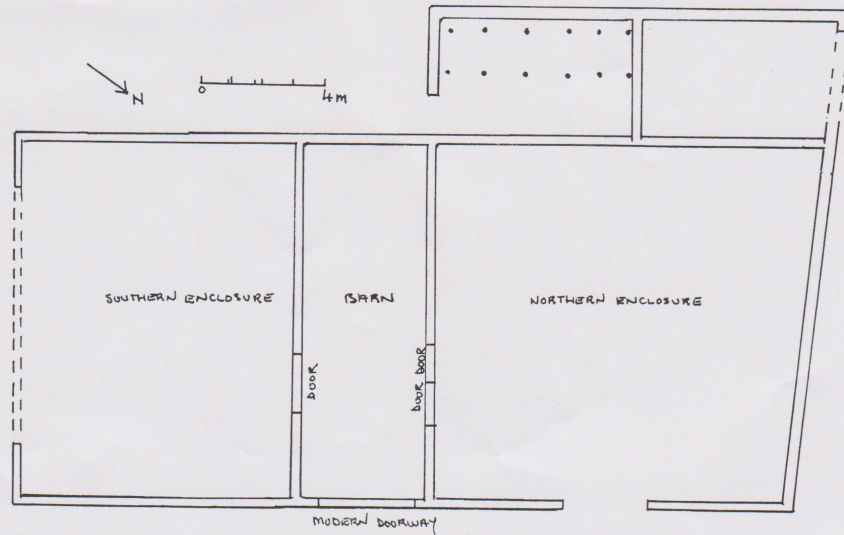
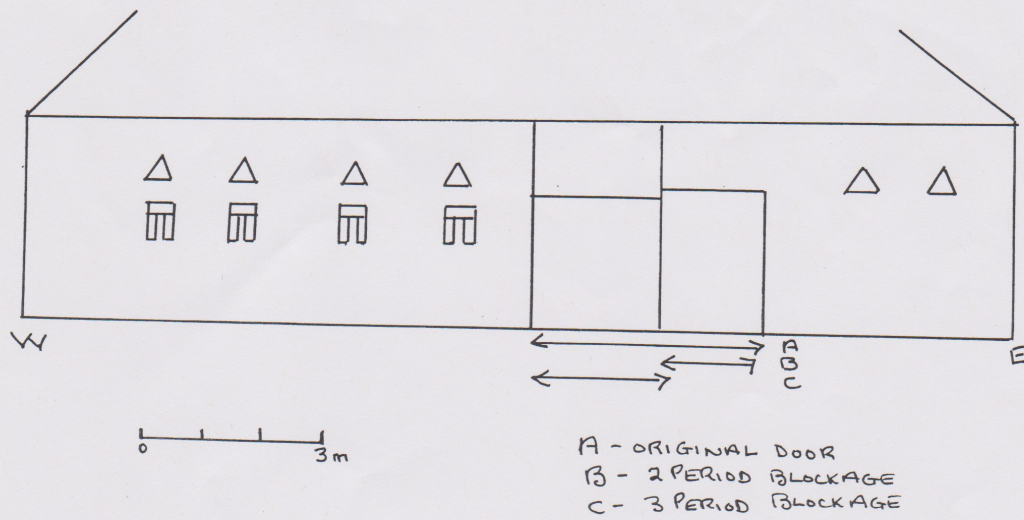
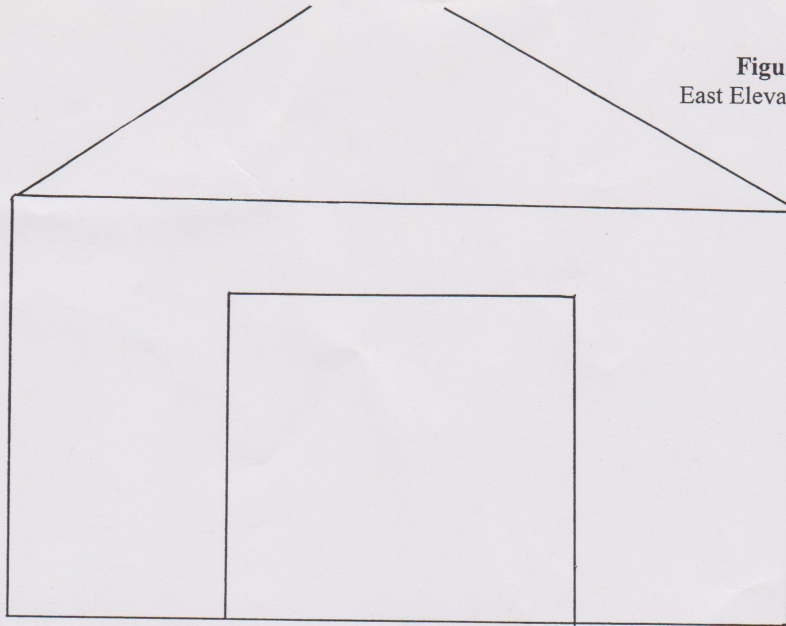


Figure 2
Longitudinal Section of North Wall



4

Figure 3
East Elevation



1 m

West Elevation

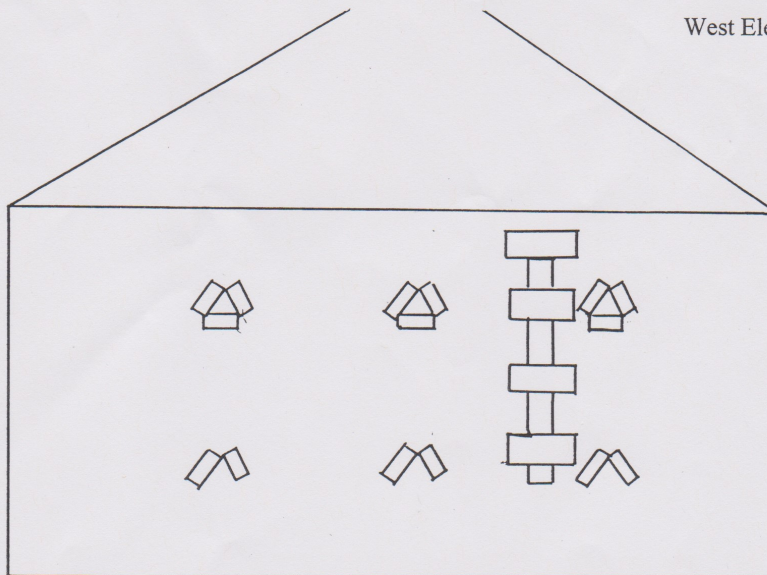
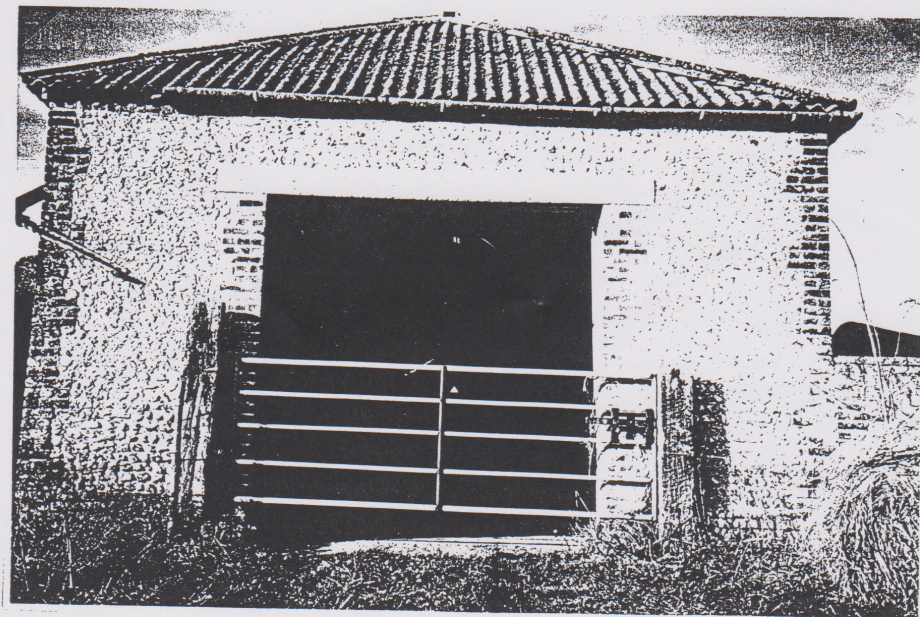


Figure 4



Barn from north



Modern doorway from east